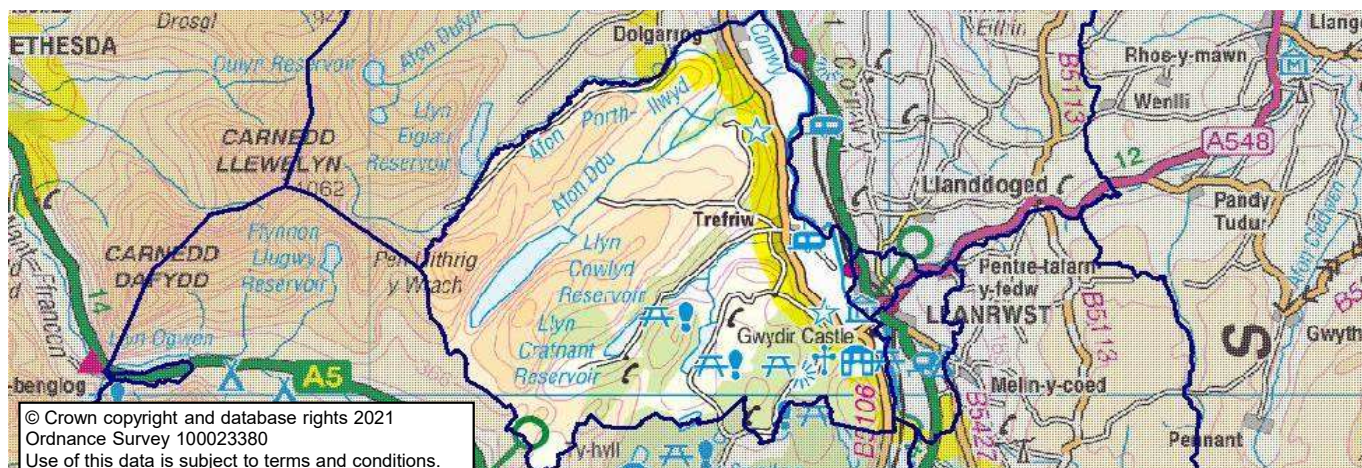


Conwy County Borough Council's ward profiles 2021

Trefriw

Map



These statistics may be used under the terms of the Open Government Licence.

Produced by the Corporate Research and Information Unit, Conwy County Borough Council, November 2021

research.unit@conwy.gov.uk

<http://www.conwy.gov.uk/statistics>

Population characteristics

Population, age and gender 2020 (ONS MYE)

	Trefriw		Conwy CB	Wales	GB
	Number	%	%	%	%
Mid-year population 2010	1,200	Change	Change	Change	Change
Mid-year population 2020	1,250	2.4%	3.1%	3.9%	6.9%
Males	650	52.4%	48.7%	49.3%	49.4%
Females	600	47.6%	51.3%	50.7%	50.6%
Aged 0-15	200	15.6%	16.0%	17.8%	18.9%
Aged 16-29	150	13.3%	13.5%	17.5%	17.2%
Aged 30-44	150	13.8%	14.8%	17.5%	19.4%
Aged 45-64	400	30.9%	27.9%	26.2%	25.8%
Aged 65+	350	26.4%	27.9%	21.1%	18.7%
Population density 2020 (persons/ha)		0.24	1.05	1.53	4.32

Population characteristics (Census 2011)

	Trefriw		Conwy CB	Wales	E & W
	Number	%			
Born in Wales	733	59.6%	54.4%	72.7%	4.9%
Born outside the UK	26	2.1%	4.3%	5.5%	13.4%
Ethnicity - white British	1,199	97.6%	95.4%	93.2%	80.5%
Other white	13	1.1%	2.3%	2.4%	5.5%
Mixed ethnic group	10	0.8%	0.8%	1.0%	2.2%
Other ethnic groups	7	0.6%	1.5%	3.4%	11.8%
Religion - Christian	745	60.6%	64.7%	57.6%	59.3%
Other religion	20	1.6%	1.5%	2.7%	8.4%
No religion	339	27.6%	26.1%	32.1%	25.1%
(of persons aged 3+)					
Speak Welsh	542	45.6%	27.4%	19.0%	-
No skills in Welsh	458	38.6%	60.6%	73.3%	-

Health

Health and provision of care (Census 2011)

	Trefriw		Conwy CB	Wales	E & W
	Number	%			
People with limiting long term illness	281	22.9%	24.2%	22.7%	17.9%
People providing unpaid care	159	12.9%	11.8%	12.1%	10.3%

Conwy County Borough Council's ward profiles 2021

Trefriw

Housing and living arrangements

Households (Census 2011)

	Trefriw		Conwy CB	Wales	E & W
	Number	%			
Total households	563		51,177	1,302,676	23,366,044
Household composition					
All one person household	188	33.4%	33.8%	30.8%	30.2%
- one person; aged 65+	85	15.1%	17.1%	13.7%	12.4%
All households with dependent children	125	22.2%	24.5%	28.2%	29.1%
- lone parents with dependents	24	4.3%	6.2%	7.5%	7.2%
All households of only pensioners	145	25.8%	29.2%	22.9%	20.9%
Population in private households	1,228	99.9%	97.7%	98.3%	98.2%
Average household size		2.18	2.20	2.31	2.36
Household facilities					
No central heating	18	3.2%	3.6%	2.3%	2.7%
Overcrowded	15	2.7%	4.3%	5.2%	8.5%
Average rooms per household		5.9	5.6	5.7	5.4
No car	98	17.4%	21.7%	22.9%	25.6%
Tenure					
Owner occupied	440	78.2%	70.1%	67.8%	64.3%
Rented from social landlord	53	9.4%	11.6%	16.5%	17.6%
Other rented	70	12.4%	18.3%	15.7%	18.0%

Dwellings by council tax band (VOA, March 2021)

	Trefriw		Conwy CB	Wales
	Number	%		
Total dwellings	640	100%	57,720	1,458,100
Band A	30	4.8%	9.3%	14.5%
Band B	140	22.2%	14.4%	20.9%
Band C	230	36.5%	26.9%	21.8%
Band D	90	14.3%	20.5%	16.2%
Band E	80	12.7%	15.9%	13.5%
Band F	50	7.9%	8.7%	8.2%
Band G	20	3.2%	3.3%	3.7%
Band H	-	-	0.7%	0.9%
Band I	-	-	0.3%	0.4%

House prices (Land Registry, 2020; CACI PayCheck, 2020)

	Trefriw		Conwy CB		Wales		E & W	
	£		£		£		£	
Median (All house types)	£	170,000	£	175,000	£	165,000	£	244,950
Lower quartile (All house types)	£	133,000	£	131,000	£	117,000	£	156,000
Ratio income:houseprice (median)		5.6		5.9		5.7		7.3
Ratio income:houseprice (lower quartile)		7.5		7.6		7.0		8.3

For this measure, results at ward level are based on data for Conwy CBC strategic sub areas.

Housing related benefits (DWP, August 2021)

	Trefriw		Conwy CB	Wales	GB
	Number	%			
Total claimants	85	100%	10,060	280,630	5,733,155
- housing benefit	35	43.5%	54.0%	51.9%	48.2%
- Universal Credit housing element	50	56.5%	46.0%	48.1%	51.8%
- private rented	40	41.2%	48.5%	34.7%	37.6%
- social rented	45	50.6%	50.9%	64.8%	61.5%
- households with children	45	50.6%	34.2%	36.7%	38.2%
Characteristics for housing benefit only					
- single pensioner (% HB)	10	32.4%	35.3%	32.9%	33.9%

These statistics may be used under the terms of the Open Government Licence.

Produced by the Corporate Research and Information Unit, Conwy County Borough Council, November 2021

research.unit@conwy.gov.uk

<http://www.conwy.gov.uk/statistics>

Conwy County Borough Council's ward profiles 2021

Trefriw

Community safety

Crime incidences (North Wales Police)

	Trefriw		Conwy CB	Wales	E & W
(year end 31st March)	Number	Rate*			
All crime incidences 2020/21	51	40.90	82.26	72.87	78.03
Violence against the person	32	25.66	40.57	30.04	30.09
Theft & handling	3	2.41	9.22	9.47	11.80
Criminal damage & arson	5	4.01	9.20	8.71	8.04

*annual crime rate per 1,000 population

Economy and employment

Industry of employment (Census 2011)

	Trefriw		Conwy CB	Wales	E & W
	Number	%			
All in employment (aged 16-74)	568		50,093	1,363,615	26,526,336
Agriculture, forestry & fishing	21	3.7%	2.1%	1.7%	0.9%
Mining, quarrying, energy, water	11	1.9%	1.6%	1.9%	1.5%
Manufacturing	30	5.3%	4.9%	10.5%	8.9%
Construction	58	10.2%	8.2%	8.2%	7.7%
Wholesale & retail	102	18.0%	17.0%	15.6%	15.9%
Transport & storage	18	3.2%	3.7%	3.9%	5.0%
Accommodation & food services	58	10.2%	9.9%	6.2%	5.6%
Communication, finance, property	10	1.8%	5.2%	6.6%	9.7%
Professional, scientific, technical	31	5.5%	4.6%	4.3%	6.6%
Administrative & support services	25	4.4%	3.7%	4.0%	4.9%
Public administration & defence	31	5.5%	7.1%	7.9%	6.0%
Education	66	11.6%	10.2%	10.1%	9.9%
Health & social work	68	12.0%	16.7%	14.5%	12.5%
Other	39	6.9%	5.1%	4.5%	5.0%
Work mainly at or from home	54	9.5%	7.2%	5.4%	5.4%
No qualifications (all aged 16+)	250	24.0%	25.6%	25.9%	22.7%
Level 4+ qualification	264	25.4%	25.5%	24.5%	27.2%

Social class (Census, 2011)

	Trefriw		Conwy CB	Wales	E & W
	Number	%			
All aged 16-74	922		81,906	2,245,166	41,126,540
Managerial & professional	266	28.9%	29.0%	27.4%	31.1%
Skilled	306	33.2%	31.8%	29.4%	29.1%
Part / unskilled	259	28.1%	27.9%	28.8%	25.2%
Students & other	91	9.9%	11.3%	14.5%	14.6%

Unemployment (claimant count) (NOMIS, 2021)

	Trefriw		Conwy CB	Wales	GB
	Number	%			
October 2021	25	3.4%	4.6%	4.3%	4.8%
July 2021 (previous quarter)	30	4.3%	5.1%	4.8%	5.4%
October 2020 (previous year)	50	6.5%	6.3%	5.7%	6.2%
October 2016 (5 years ago)	15	1.9%	2.1%	2.2%	1.8%
Claimants aged 16-24 (Oct-21)*	<3	-	17.4%	19.3%	17.0%
Claimants aged 50+ (Oct 21)*	5	-	29.8%	23.1%	24.3%

* Rounded to nearest 5. % is of all claimants.

These statistics may be used under the terms of the Open Government Licence.

Produced by the Corporate Research and Information Unit, Conwy County Borough Council, November 2021

research.unit@conwy.gov.uk

<http://www.conwy.gov.uk/statistics>

Conwy County Borough Council's ward profiles 2021

Trefriw

Income and benefits

Household income (CACI PayCheck, 2021)

	Trefriw		Conwy CB	Wales	GB
	£	%			
Median income (annual)	28,850		28,300	27,850	32,750
Lower quartile	16,650		16,350	15,900	18,150
Households below 60% GB median (= < £19,642)		32.0%	32.9%	34.0%	28.0%

For this measure, results at ward level are based on data for Conwy CBC strategic sub areas.

Benefits (DWP, May 2021)

There is a discontinuity in the benefits data, as Universal Credit is rolled out and starts to replace older awards systems. % is of all in that age group.

	Trefriw		Conwy CB	Wales	GB
	Number	%			
Children (aged 0-15)					
Disability Living Allowance (DLA)	10	5.6%	5.5%	4.7%	4.5%
Working age (aged 16-66)					
Universal Credit	105	13.8%	14.6%	13.9%	14.1%
Job Seekers Allowance (JSA)	5	0.9%	0.5%	0.4%	0.4%
Employment & Support Allowance (ESA)	30	4.2%	5.9%	6.2%	4.3%
Disability Living Allowance (DLA)	0	-	0.3%	0.2%	0.6%
Personal Independence Payments (PIP)	45	6.1%	7.8%	8.1%	5.5%
Carer's Allowance	20	2.5%	3.0%	3.1%	2.4%
Pensioners (aged 67+)					
State Pension (Nov 2020)	270				
Pension Credit	30	10.4%	13.1%	14.6%	13.2%
Attendance Allowance	30	10.4%	17.2%	16.5%	13.8%
Disability Living Allowance (DLA)	10	4.0%	5.5%	8.6%	5.2%
Personal Independence Payments (PIP)	10	2.7%	4.0%	5.6%	3.6%
Carer's Allowance	10	3.3%	3.7%	4.1%	2.9%

Poverty and deprivation

Children in low income families - relative income poverty (DWP, 2019/2020)

	Trefriw		Conwy CB	Wales	GB
Children in in-work families	40	21.0%	17.4%	16.9%	16.7%
Children in out-of-work families	15	8.2%	7.4%	8.2%	6.7%
Total	55	29.2%	24.8%	25.0%	23.4%

As % all children aged 0-15. 'In work' is working 16 hrs a week or more. Relative income poverty = below 60% of UK median.

Welsh index of multiple deprivation (Welsh Government, 2019)

	Trefriw		Conwy CB	
Total LSOAs in area	1		71	
No. LSOAs in most deprived:	10%	25%	10%	25%
In each deprivation domain				
Overall Index	0	0	4	11
Income	0	0	5	14
Employment	0	0	5	15
Health	0	0	3	10
Education	0	0	1	9
Access to services	1	1	9	18
Housing	0	0	6	17
Community safety	0	0	0	4
Physical environment	0	0	6	16

Deprivation data shows how many lower super output areas (LSOAs) in the area are in the 10% and 25% most deprived LSOAs in Wales.

These statistics may be used under the terms of the Open Government Licence.

Produced by the Corporate Research and Information Unit, Conwy County Borough Council, November 2021

research.unit@conwy.gov.uk

<http://www.conwy.gov.uk/statistics>